



Baltic Wood®

WOODEN™  
FLOORS  
INSPIRED BY FASHION

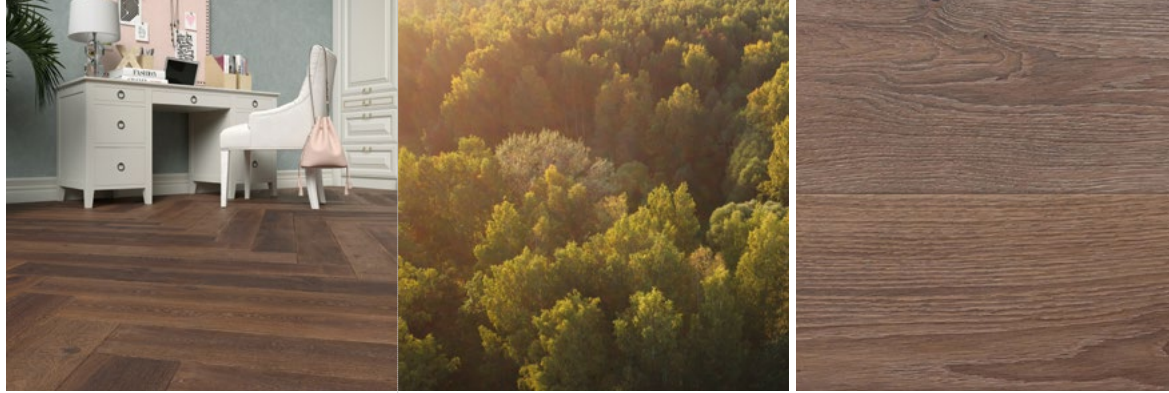


Timeless™  
Collection



# BALTIC WOOD

EXPERIENCED MANUFACTURER  
OF EXTRAORDINARY WOODEN FLOORS



## › KNOWLEDGE AND EXPERIENCE

- More than 20 years on the domestic and international markets
- Presence in 62 countries
- Almost 30 million m<sup>2</sup> of flooring sold

## › CREATIVE PERFECTION

- Modern and sustainable three-layered floors
- Precise joint and wood surface finish
- Factory guarantee of durability and structure

## › SPECIAL OFFER

- Wooden floors in 5 unique collections
- A selection of European wood species, which can be additionally stained, brushed, oiled and bevelled
- Wide array of sizes and finishes

## › UNIQUE TECHNOLOGY

- Baltic LOC™ system – easy adhesive-free installation
- SQUARE EDGE system – perfect element fit in bevel-free floors

## › SUPREME QUALITY

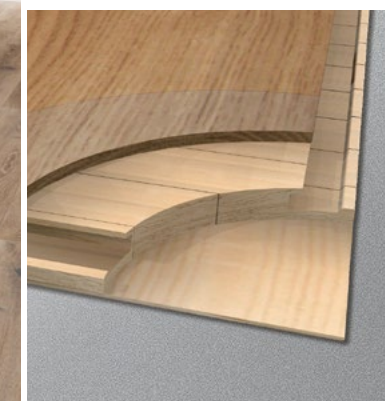
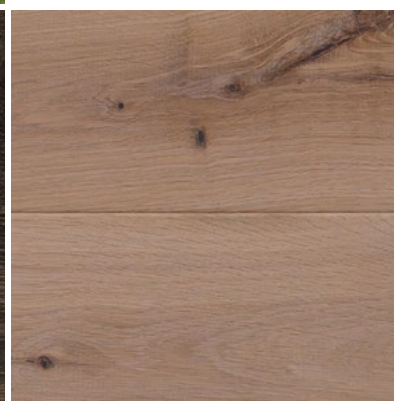
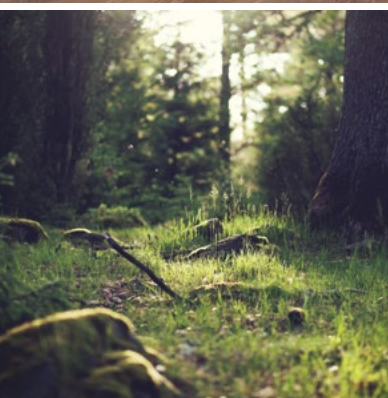
- The product complies with the highest quality standards, bearing the following certification: ISO 9001, ISO 14001, M1
- 30-year guarantee for the structure of all floors on offer

## › RESPONSIBLE MANUFACTURER

- Use of raw materials from FSC-certified forests
- 100% rational recycling policy
- Use of eco-friendly varnishes, natural oils and adhesives with very low formaldehyde emissions (class E1)

## › COOPERATION WITH INDUSTRY LEADERS

- In the scope of production technology
- In the scope of production components
- In the scope of adhesive-free joints

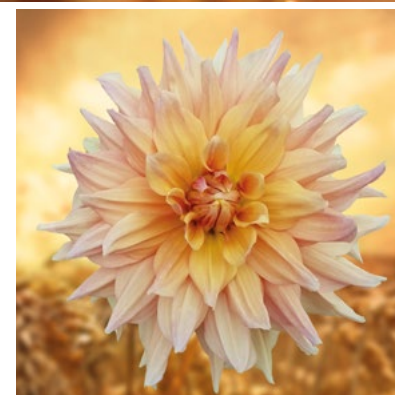




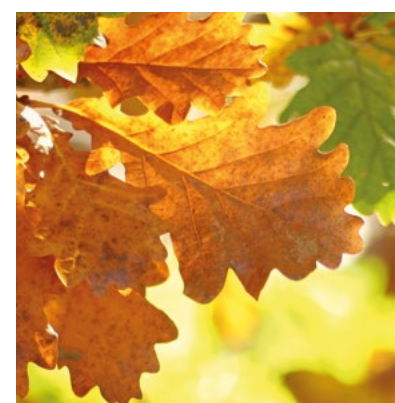


# Timeless™ Collection

## ARTISTIC FLOORS DISTRESSED BY HUMAN HAND



Artistically distressed three-layered oak floors in the pattern of 1-row board are manufactured in the process of saturating the wood surface with the noblest oils and pigments, carefully rubbed in by human hand after the boards have been artistically distressed in the process of planing, brushing, notching or applying the woodworm effect. Owing to the unique technology of reactive stain and oil application, the colour of the artistically distressed floor matures over time, thanks to which it becomes even more beautiful and nobler. The board edges are highlighted with hand-crafted bevel on each side, which crowns the unusual visual effect. The adhesive-free 2G or 5G joint makes for quick and clean assembly.



MEDIEVAL CASTLE 1R  
HERRINGBONE





**WOOD TIMBER  
WITH ARTISTIC SOUL**



**HAND-DISTRESSED  
WOODEN FLOORS**

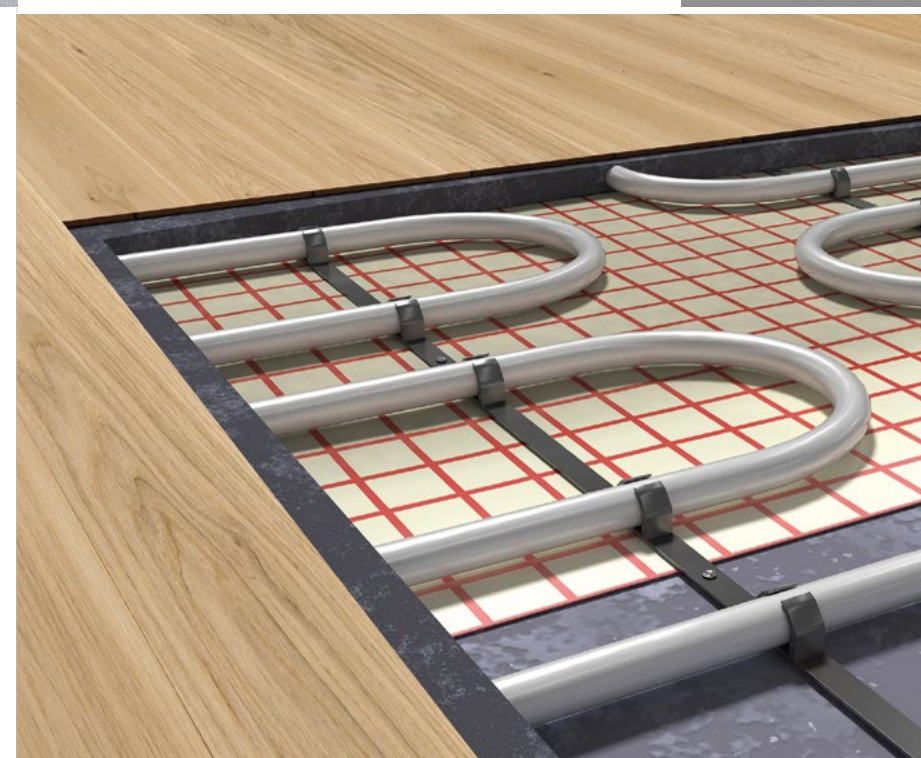
**WHOLE BOARD  
THICKNESS: 14 mm  
NOBLE WOOD  
THICKNESS: 3.5 mm**



**2G  
ADHESIVE-FREE  
CLICK ASSEMBLY  
SYSTEM**



**NATURAL ADVANTAGES  
NATURAL PROPERTIES  
NATURAL BEAUTY**



**POSSIBILITY  
OF INSTALLATION  
OVER FLOOR  
HEATING**





UNFINISHED STORY 1R



#### EN

Oak floor. Wood structure distinctly enhanced through the brushing and planing process. High shade variation from board to board.  
Finish: transparent ECO oil

#### RU

дубовый пол - Поверхность древесины чётко подчеркнута благодаря брашированию и строганию. Большая разнотонность.  
Отделка: прозрачное эко масло

#### DE

Eiche Fussboden. Holzstruktur eindeutig durch Bürsten-Prozess betont, die Oberfläche handgehobelt. Hohe Volatilität Farbtönen.  
Oberflächenfinish: gebürstet ECO transparent geölt

#### IT

Pavimento in rovere La struttura in legno è nettamente marcata grazie al processo di spazzolatura e piallatura. Elevata variabilità delle tonalità tra le tavole.  
Finitura: l'olio ECO trasparente

#### ES

El parquet de roble. La estructura de la madera fuertemente subrayada por el proceso de cepillado y de lijado. Contrastes de colores, entre las laminas muy vivos.  
Acabado: aceite ECO transparente

#### FR

Parquet en chêne. La structure du bois bien soulignée grâce au brossage et rabotage. Différentes nuances de teintes entre les lames.  
Finition: Huile ECO transparente



NOBLE **3.5 mm**  
WOOD LAYER

**Premium  
SIZE**  
2200x182x14 mm

*Timeless™*  
Collection





MOZART NOTES 1R



#### EN

Oak floor. Wood structure distinctly enhanced through the brushing and planing process. High shade variation from board to board.  
Finish: transparent ECO oil

#### RU

Дубовый пол - Поверхность древесины чётко подчеркнута благодаря брашированию и строганию. Большая разнотонность.  
Отделка: прозрачное эко масло

#### DE

Eiche Fussboden. Holzstruktur eindeutig durch Bürsten-Prozess betont, die Oberfläche handgehobelt. Hohe Volatilität Farbtönen.  
Oberflächenfinish: gebürstet ECO transparent geölt

#### IT

Pavimento in rovere. La struttura in legno è nettamente marcata grazie al processo di spazzolatura e piallatura. Elevata variabilità delle tonalità tra le tavole.  
Finitura: l'olio ECO trasparente

#### ES

El parquet de roble. La estructura de la madera fuertemente subrayada por el proceso de cepillado y de lijado. Contrastes de colores, entre las laminas muy vivos.  
Acabado: aceite ECO transparente

#### FR

Parquet en chêne. La structure du bois bien soulignée grâce au brossage et rabotage. Différentes nuances de teintes entre les lames.  
Finition: Huile ECO transparente



NOBLE  
WOOD LAYER

3.5 mm

Premium  
SIZE  
2200x182x14 mm

Timeless™  
Collection





KING'S RING 1R



#### EN

Oak floor. Wood structure distinctly enhanced through the brushing and planing process. High shade variation from board to board.  
Finish: transparent ECO oil

#### RU

Дубовый пол - Поверхность древесины чётко подчеркнута благодаря брашированию и строганию. Большая разнотонность.  
Отделка: прозрачное эко масло

#### DE

Eiche Fussboden. Holzstruktur eindeutig durch Bürsten-Prozess betont, die Oberfläche handgehobelt. Hohe Volatilität Farbtönen.  
Oberflächenfinish: gebürstet ECO transparent geölt

#### IT

Pavimento in rovere. La struttura in legno è nettamente marcata grazie al processo di spazzolatura e piallatura. Elevata variabilità delle tonalità tra le tavole.  
Finitura: l'olio ECO trasparente

#### ES

El parquet de roble. La estructura de la madera fuertemente subrayada por el proceso de cepillado y de lijado. Contrastes de colores, entre las laminas muy vivos.  
Acabado: aceite ECO transparente

#### FR

Parquet en chêne. La structure du bois bien soulignée grâce au brossage et rabotage. Différentes nuances de teintes entre les lames.  
Finition: Huile ECO transparente



NOBLE  
WOOD LAYER

3.5 mm

**Premium  
SIZE**  
2200x182x14 mm

*Timeless™*  
Collection





ANGELS & DEMONS 1R



#### EN

Oak floor. The wood structure is markedly enhanced owing to the brushing and planing process. The hollows are coloured dark grey. Shade variation is high.

Finish: transparent ECO oil rubbed brushed

#### RU

Структура древесины четко подчеркнута благодаря брашированию и строганию. Темно-серая морилка в углублениях. Большая разнотонность.

Отделка: прозрачное протертое ЭКО масло браш

#### DE

Holzstruktur eindeutig durch Bürsten-Prozess betont, die Oberfläche handgehobelt. Die Aussparungen braun gefärbt (1 Stab). Die Farbvariation ist hoch.

Oberflächenfinish: gebürstet oxidativ ECO transparent geölt eingerieben

#### IT

Pavimento in rovere. La struttura del legno è nettamente marcata grazie al processo di spazzolatura e piallatura. Elevata variabilità delle tonalità tra le tavole.

Finitura: l'olio ECO trasparente

#### ES

El parquet de roble. La estructura de la madera fuertemente subrayada por el proceso de cepillado. La superficie desgastada a mano, lijada y golpeada. Los poros teñidos en gris oscuro. Contrastes de colores muy vivos.

Los acabados: aceite ECO transparente

#### FR

Parquet en chêne. La structure du bois bien soulignée grâce au brossage et rabotage. Les pores teintés en gris foncé. Importante variation des nuances entre les lames.

Finition: Huile ECO transparente



NOBLE **3.5 mm**  
WOOD LAYER

**Premium**  
SIZE  
2200x182x14 mm

*Timeless™*  
Collection





MEDIEVAL CASTLE 1R



MEDIEVAL CASTLE 1R  
HERRINGBONE

EN

Oak floor. The wood structure is markedly enhanced owing to the brushing and planing process. The hollows are coloured brown. Shade variation is high. Finish: transparent ECO oil rubbed brushed

DE

Holzstruktur eindeutig durch Bürsten-Prozess betont, die Oberfläche handgehobelt. Die Aussparungen braun gefärbt. Die Farbvariation ist hoch. Oberflächenfinish: gebürstet oxidativ ECO transparent geölt eingerieben

ES

El parquet de roble. La estructura de la madera fuertemente subrayada por el proceso de cepillado. La superficie desgastada a mano, lijada y golpeada. Los poros teñidos en marrón. Contrastes de colores muy vivos. Los acabados: aceite ECO transparente

RU

Структура древесины четко подчеркнута благодаря брашированию и строганию. Коричневая морилка в углублениях. Большая разнотонность. Отделка: прозрачное протертое ЭКО масло браш

IT

Pavimento in rovere. La struttura del legno è nettamente marcata grazie al processo di spazzolatura e piallatura. Elevata variabilità delle tonalità tra le tavole. Finitura: l'olio ECO trasparente

FR

Parquet en chêne. La structure du bois bien soulignée grâce au brossage et rabotage. Les pores teintées en brun. Importante variation des nuances entre les lames. Finition: Huile ECO transparente



NOBLE 3.5 mm WOOD LAYER

Premium SIZE 2200x182x14 mm

mini SIZE 1080x148x14 mm ONLY IN THE HERRINGBONE PATTERN

Timeless™ Collection





SECRET CHAMBER 1R



#### EN

Oak floor. The wood structure is markedly enhanced owing to the brushing and planing process. The hollows and bevels are coloured grey. Shade variation is high.  
Finish: transparent ECO oil rubbed brushed

#### RU

Структура древесины четко подчеркнута благодаря брашированию и строганию. Углубления и фаска покрыты серым цветом. Большая разнотонность.  
Отделка: прозрачное протертое ЭКО масло браш

#### DE

Holzstruktur eindeutig durch Bürsten-Prozess betont, die Oberfläche hand-gehobelt Die Aussparungen grau gefärbt. Die Farbvariation ist hoch.  
Oberflächenfinish: gebürstet oxidativ ECO transparent geölt eingerieben

#### IT

Pavimento in rovere. La struttura del legno è nettamente marcata grazie al processo di spazzolatura e piallatura. Elevata variabilità delle tonalità tra le tavole.  
Finitura: l'olio ECO trasparente

#### ES

El parquet de roble. La estructura de la madera fuertemente subrayada por el proceso de cepillado. La superficie desgastada a mano, lijada y golpeada, los poros y los bisels teñidos en gris. Contrastes de colores muy vivos.  
Los acabados: aceite ECO transparente

#### FR

Parquet en chêne. La structure du bois bien soulignée grâce au brossage et rabotage. Les pores et les chanfreins teintées en gris. Importante variation des nuances entre les lames.  
Finition: Huile ECO transparente

HANDMADE  
4V

2G

☆☆

NOBLE  
WOOD LAYER  
3.5 mm

Premium  
SIZE  
2200x182x14 mm

Timeless™  
Collection





POET'S INSPIRATION 1R



#### EN

Slightly heat-treated oak floor. The wood structure is markedly enhanced owing to the brushing and planing process. The hollows are coloured grey. Shade variation is high. There may be some colour variation due to the heat treatment process.

Finish: transparent ECO oil rubbed brushed

#### DE

Holzstruktur eindeutig durch Bürsten-Prozess betont, die Oberfläche handgehobelt. Die Aussparungen grau gefärbt. Hohe Volatilität Farbtönen. Farbunterschiede von der Wärmebehandlung.

Oberflächenfinish: gebürstet oxidativ ECO transparent geölt eingerieben

#### ES

El parquet de roble ligeramente termotratado. La estructura de la madera fuertemente subrayada por el proceso de cepillado. La superficie desgastada a mano, lijada y golpeada. Las imperfecciones, los poros y los agujeros teñidos en gris. Contrastes de colores naturales muy vivos, resultantes, también, del proceso de termotratado.

Los acabados: aceite ECO transparente frotado cepillado

#### RU

Дуб слегка термообработанный. Структура древесины четко подчеркнута благодаря брашированию и строганию. Серая морилка в углублениях. Большая разнотонность. Могут выступать разнотонности из-за термообработки древесины.

Отделка: прозрачное протертое ЭКО масло браш

#### IT

Pavimento in rovere leggermente affumicato. La struttura del legno è nettamente marcata grazie al processo di spazzolatura e piallatura. Elevata variabilità delle sfumature tra le tavole. Ci possono essere differenze di colore derivanti dal processo di trattamento termico.

Finitura: l'olio ECO trasparente

#### FR

Parquet en chêne, thermotraité légèrement. La structure du bois bien soulignée grâce au brossage et rabotage. Les pores et les imperfections teintées en gris. Variation des nuances entre les lames, importante et visible, résultant aussi du processus de thermotraitement.

Finition: Huile ECO transparente



NOBLE 3.5 mm WOOD LAYER

**Premium**  
SIZE  
2200x182x14 mm

*Timeless™*  
Collection





SECRETS OF VERONA 1R



#### EN

Oak floor. The surface has a decided rustic look, and is characterized by slightly planed edges in the whole length. Shade variation is high.  
Finish: transparent ECO oil rubbed brushed

#### RU

Дубовый пол. Поверхность слегка строганная. Большая разнотонность.  
Отделка: прозрачное протертое ЭКО масло браш

#### DE

Eichenholzboden. Die Oberfläche mit einer starken rustikalen Optik durch leicht handgehobelte Kanten längsseitig gekennzeichnet. Die Farbvariation ist hoch.  
Oberflächenfinish: oxidativ ECO transparent geölt eingerieben

#### IT

Pavimento in rovere. La superficie dall'aspetto decisamente rustico è caratterizzata da una superficie leggermente piallata. Elevata variabilità delle tonalità tra le tavole.  
Finitura: l'olio ECO trasparente

#### ES

El parquet de roble. Superficie desgastada a mano, lijada y golpeada. El carácter muy rustico está reforzado por los biselés irregulares, ligeramente golpeados. Contrastes de colores muy vivos.  
Los acabados: aceite ECO transparente frotado

#### FR

Parquet en chêne de caractère très rustique, grâce à la structure légèrement rabotée et aux chanfreins rabotés, aussi, sur toute la longueur. Importante variation des nuances entre les lames.  
Finition: Huile ECO transparente



4V

2G

W

☆☆

↘

NOBLE  
WOOD LAYER

3.5 mm

**Premium  
SIZE**  
2200x182x14 mm

*Timeless™*  
Collection





LOST COFFER 1R



#### EN

Oak floor. Wood structure emphasised with the brushing and planing process. Boards characterised by high shade variation.  
Finish: transparent ECO oil rubbed brushed

#### RU

Дубовый пол. Структура древесины четко подчеркнута благодаря брашированию и строганию. Большая разнотонность.  
Отделка: прозрачное протертое ЭКО масло браш

#### DE

Eichenholzboden. Holzstruktur durch Bürstenprozess eindeutig betont, Oberfläche handgehobelt. Große Volatilität von Farbtönen.  
Oberflächenfinish: gebürstet oxidativ ECO transparent geölt eingerieben

#### IT

Pavimento in rovere. La struttura del legno è nettamente marcata grazie al processo di spazzolatura e piallatura. Elevata variabilità delle sfumature tra le tavole.  
Finitura: l'olio ECO trasparente

#### ES

El parquet de roble. Estructura de madera marcada por el proceso de cepillado con garlopa, desbastado, alijado y cepillado. Se caracteriza por importante variación de tonalidad entre las lamas.  
Los acabados: aceitado ECO frotado cepillado

#### FR

Parquet en chêne. La structure du bois bien soulignée grâce au brossage et rabotage. Différentes nuances de teintes entre les lames.  
Finition: Huile ECO transparente



NOBLE **3.5 mm**  
WOOD LAYER

**Premium  
SIZE**  
2200x182x14 mm

*Timeless™*  
Collection





#### EN

Oak floor. Wood structure emphasised with the brushing and planing process. Boards characterised by high shade variation.

Finish: transparent ECO oil rubbed brushed

#### RU

Дубовый пол. Структура древесины четко подчеркнута благодаря брашированию и строганию. Большая разнотонность.

Отделка: прозрачное протертое ЭКО масло браш

#### DE

Eichenholzboden. Holzstruktur durch Bürstenprozess eindeutig betont, Oberfläche handgehobelt. Große Variation von Farbtönen.

Oberflächenfinish: gebürstet oxidativ ECO transparent geölt eingerieben

#### IT

Pavimento in rovere. La struttura del legno è nettamente marcata grazie al processo di spazzolatura e piallatura. Elevata variabilità delle sfumature tra le tavole.

Finitura: l'olio ECO trasparente

#### ES

El parquet de roble. Estructura de madera marcada por el proceso de cepillado con garlopa, desbastado, alijado y cepillado. Se caracteriza por importante variación de tonalidad entre las lamas.

Los acabados: aceitado ECO frotado cepillado

#### FR

Parquet en chêne. La structure du bois bien soulignée grâce au brossage et rabotage. Différentes nuances de teintes entre les lames.

Finition: Huile ECO transparente

HOUSE OF SOULS 1R



NOBLE  
WOOD LAYER

**3.5 mm**  
**Premium**  
**SIZE**  
2200x182x14 mm

*Timeless™*  
Collection





STARDUST 1R



EN

Oak floor. Wood structure distinctly enhanced through the brushing and planing process. High shade variation from board to board.  
Finish: transparent ECO oil

RU

Дубовый пол - Поверхность древесины чётко подчеркнута благодаря брашированию и строганию. Большая разнотонность.  
Отделка: прозрачное эко масло

DE

Eiche Fussboden. Holzstruktur eindeutig durch Bürsten-Prozess betont, die Oberfläche handgehobelt. Hohe Volatilität Farbtönen.  
Oberflächenfinish: gebürstet ECO transparent geölt

IT

Pavimento in rovere. La struttura in legno è nettamente marcata grazie al processo di spazzolatura e piallatura. Elevata variabilità delle tonalità tra le tavole.  
Finitura: l'olio ECO trasparente

ES

El parquet de roble. La estructura de la madera fuertemente subrayada por el proceso de cepillado y de lijado. Contrastes de colores, entre las laminas muy vivos.  
Acabado: aceite ECO transparente

FR

Parquet en chêne. La structure du bois bien soulignée grâce au brossage et rabotage. Différentes nuances de teintes entre les lames.  
Finition: Huile ECO transparente

HANDMADE  
4V

2G

NOBLE  
WOOD LAYER  
3.5 mm

Premium  
SIZE  
2200x182x14 mm





MOONLIGHT 1R



#### EN

Oak floor. Wood structure distinctly enhanced through the brushing and planing process. High shade variation from board to board.  
Finish: transparent ECO oil

#### RU

Дубовый пол - Поверхность древесины чётко подчеркнута благодаря брашированию и строганию. Большая разнотонность.  
Отделка: прозрачное эко масло

#### DE

Eiche Fußboden. Holzstruktur eindeutig durch Bürsten-Prozess betont, die Oberfläche handgehobelt. Hohe Volatilität Farbtönen.  
Oberflächenfinish: gebürstet ECO transparent geölt

#### IT

Pavimento in rovere. La struttura in legno è nettamente marcata grazie al processo di spazzolatura e piallatura. Elevata variabilità delle tonalità tra le tavole.  
Finitura: l'olio ECO trasparente

#### ES

El parquet de roble. La estructura de la madera fuertemente subrayada por el proceso de cepillado y de lijado. Contrastes de colores, entre las lamas muy vivos.  
Acabado: aceite ECO transparente

#### FR

Parquet en chêne. La structure du bois bien soulignée grâce au brossage et rabotage. Différentes nuances de teintes entre les lames.  
Finition: Huile ECO transparente



NOBLE  
WOOD LAYER  
3.5 mm

**Premium  
SIZE**  
2200x182x14 mm

*Timeless™*  
Collection





OLD LEGEND 1R



#### EN

Oak floor. Wood structure distinctly enhanced through the brushing and planing process. High shade variation from board to board.  
Finish: transparent ECO oil

#### RU

Дубовый пол - Поверхность древесины чётко подчеркнута благодаря брашированию и строганию. Большая разнотонность.  
Отделка: прозрачное эко масло

#### DE

Eiche Fussboden. Holzstruktur eindeutig durch Bürsten-Prozess betont, die Oberfläche handgehobelt. Hohe Volatilität Farbtönen.  
Oberflächenfinish: gebürstet ECO transparent geölt

#### IT

Pavimento in rovere. La struttura in legno è nettamente marcata grazie al processo di spazzolatura e piallatura. Elevata variabilità delle tonalità tra le tavole.  
Finitura: l'olio ECO trasparente

#### ES

El parquet de roble. La estructura de la madera fuertemente subrayada por el proceso de cepillado y de lijado. Contrastes de colores, entre las laminas muy vivos.  
Acabado: aceite ECO transparente

#### FR

Parquet en chêne. La structure du bois bien soulignée grâce au brossage et rabotage. Différentes nuances de teintes entre les lames.  
Finition: Huile ECO transparente



NOBLE  
WOOD LAYER  
3.5 mm

**Premium  
SIZE**  
2200x182x14 mm

*Timeless™*  
Collection



# FLOOR PROTECTION

1.

Regularly (at least twice a week) clean the floors with a vacuum cleaner and a special brush attachment or with a soft sweeper. Floor mopping must be preceded by vacuum-cleaning.



4.

Regularly cut the claws of your pets, which will protect your floor from scratches. Remember to wipe clean the paws of your dog every time you come back from a walk – this way you will keep away dirt and sand from your interiors.



2.

Clean the wooden floors with a moist and not wet mop. The excessive amount of water can cause swelling, warping or discoloration of the floor. Accidentally spilt liquids must be immediately wiped up, otherwise the stains will become hardly removable. Use only Baltic Protection System agents. Do not apply waxes, as they can easily matt the wooden surface.

5.

Doormats – a mixture of water and sand, coupled with intense wear of the floor brings about the same effect as rubbing the floor with sandpaper. Doormats placed at the front door and the exit to the terrace protect the floor against dirt. Keep doormats clean – replace them from time to time.



3.

Chair or furniture legs can scratch the floor surface. Use protective caps – chair and furniture legs should be covered with protective felt pads and as for swivel chairs, choose ones with special castors intended for wooden surfaces. Avoid impermeable rubber mats and carpets.



6.

Keep an optimal air humidity level in the rooms, 30–60% at the temperature of 20°C. In winter, when the air humidity level drops, use air humidifiers. Remember that wood will naturally tend to achieve the state of hygroscopic balance – it is important to air the rooms from time to time.



# PRODUCT INDEX

Timeless™  
Collection

FLOOR	SIZE	INDEX	PAGE
UNFINISHED STORY 1R 2G	2200x182x14 mm	WEF1AI11AR289T-1	8
MOZART NOTES 1R 2G	2200x182x14 mm	WEF1AG11AR469T-1	10
KING'S RING 1R 2G	2200x182x14 mm	WEF1AG11AR449T-1	12
ANGELS & DEMONS 1R 2G	2200x182x14 mm	WEF1AG11AR16-T-1	14
MEDIEVAL CASTLE 1R 2G	2200x182x14 mm	WEF1AG11AR17-T-1	16
MEDIEVAL CASTLE 1R T&G herringbone pattern – right	1080x148x14 mm	WCF1AG22AR17-AD1	17
MEDIEVAL CASTLE 1R T&G herringbon pattern – left	1080x148x14 mm	WWF1AG22AR17-AD1	17
SECRET CHAMBER 1R 2G	2200x182x14 mm	WEF1AG11AR19-T-1	18
POET'S INSPIRATION 1R 2G	2200x182x14 mm	WEF1AG11AR20-T-1	20
SECRETS OF VERONA 1R 2G	2200x182x14 mm	WEF1AG11-RO6-T-1	22
LOST COFFER 1R 2G	2200x182x14 mm	WEF1AG11AR239T-1	24
HOUSE OF SOULS 1R 2G	2200x182x14 mm	WEF1AG11AR249T-1	26
STARDUST 1R 2G	2200x182x14 mm	WEF1AG11AR279T-1	28
MOONLIGHT 1R 2G	2200x182x14 mm	WEF1AG11AR299T-1	30
OLD LEGEND 1R 2G	2200x182x14 mm	WEF1AG11AR439T-1	32



STARDUST 1R



# FLOOR + SKIRTING = PERFECT COMBINATION



For each Timeless Collection™ floor you can choose a skirting board made of brushed solid wood with an identical finish.

In particular cases production time can last up to 6 weeks.

# SURFACE FINISHES OF BALTIC WOOD FLOORS



### OILS

- ECO
- transparent or coloured
- oiling system consisting of 2 layers
- they permeate the wood, impregnating it slightly
- durable and safe
- extremely easy to renovate the whole floor or to carry out spot surface repair
- let the floor „breathe“
- enhance the natural character of wood

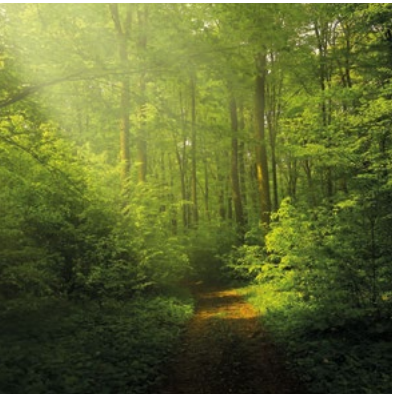
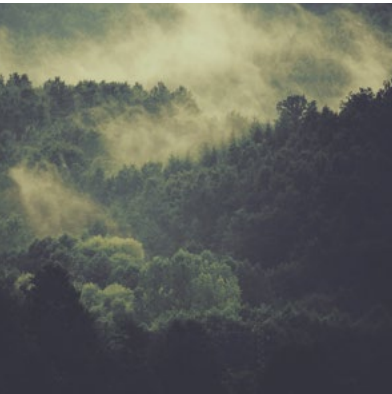


### ICONS LEGEND:

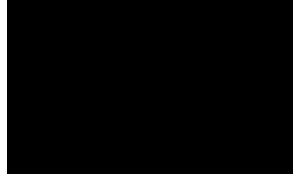
- HANDMADE  
**4V**  
4-SIDED  
HANDMADE MICROBEVEL
- 2G**  
ADHESIVE-FREE  
CLICK ASSEMBLY SYSTEM
- TG**  
ADHESIVE-BASED  
INSTALLATION SYSTEM
- W**  
FLOOR HEATING: YES
- ☆☆**  
HARD WOOD
- ↘**  
BECOMES  
SLIGHTLY DARKER
- ↙**  
BECOMES  
LIGHTER

NOTE:  
Baltic Wood S.A. reserves the right to change the technical parameters of the products on offer as well as to discontinue them.

Baltic Wood floors are manufactured only from natural wood, and that is why the shade, occurrence of knots, ring pattern and grain structures of particular elements – boards, slats etc. – can differ from one another as well as in relation to the photos included in all Baltic Wood marketing materials. The natural variation can be noticed when comparing the final product with the samples presented at the exposition. The wood variety is a natural feature of this noble raw material, determining its beauty and uniqueness.







See more:

[www.balticwood.eu](http://www.balticwood.eu)